

current state at contact

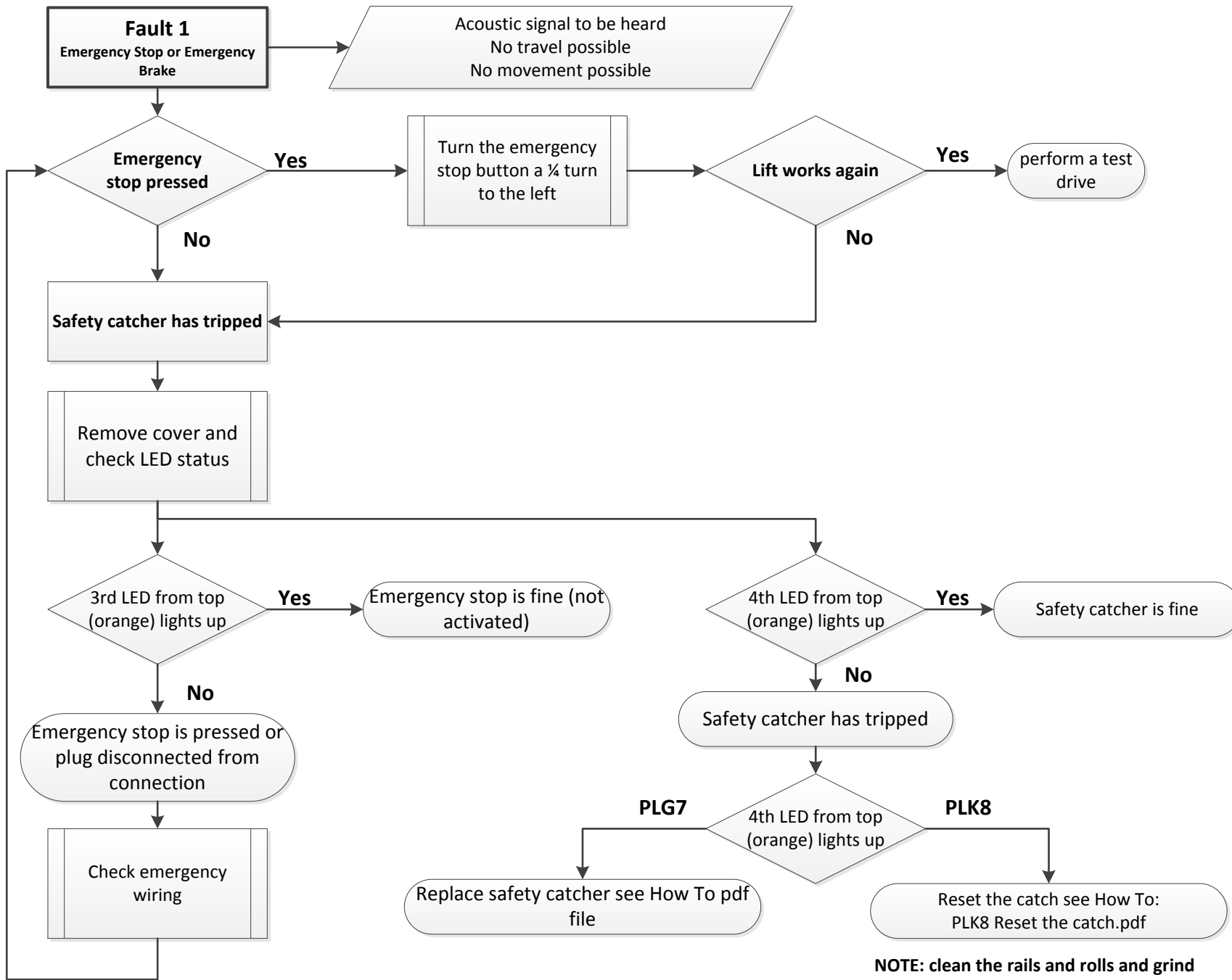
Lift Data

- **Date:**
- **Time:**
- **editor:**
- **PLG7** **PLK8** **Serial number:**
- **Construction year:**
- **Site:** Grounds Indoor plant
- **Position of the lift:** Stop downstairs between the stops stop upstairs parking position
- **Position of the Platform:** Open 0° aslant ca. ° Closed 75-85° Closed with contact 90°
- **Notice on the display:**
- **What has already been tested/manipulated**
- **Input status on the display:** 1 2 3 4 5 6 7 8 9 A B C D E F (encircle which are white deposited)

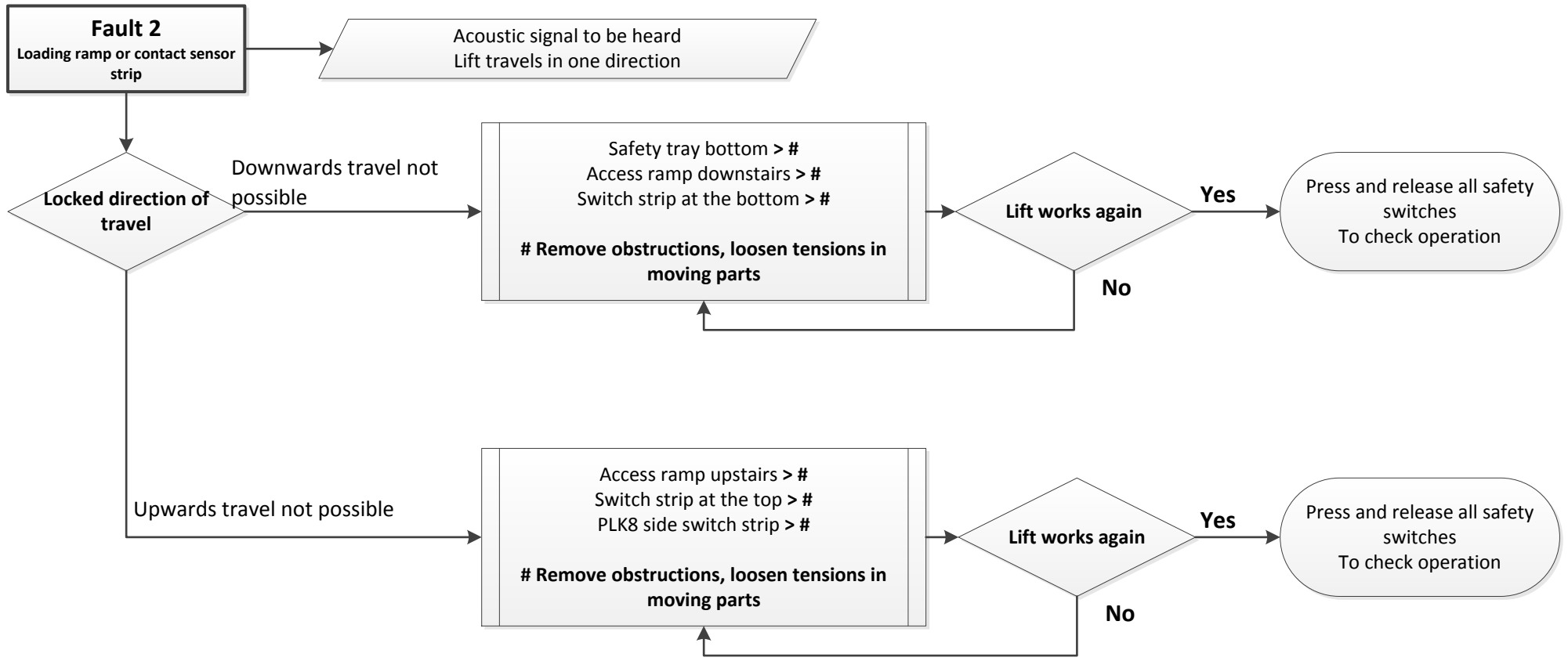
Contact person

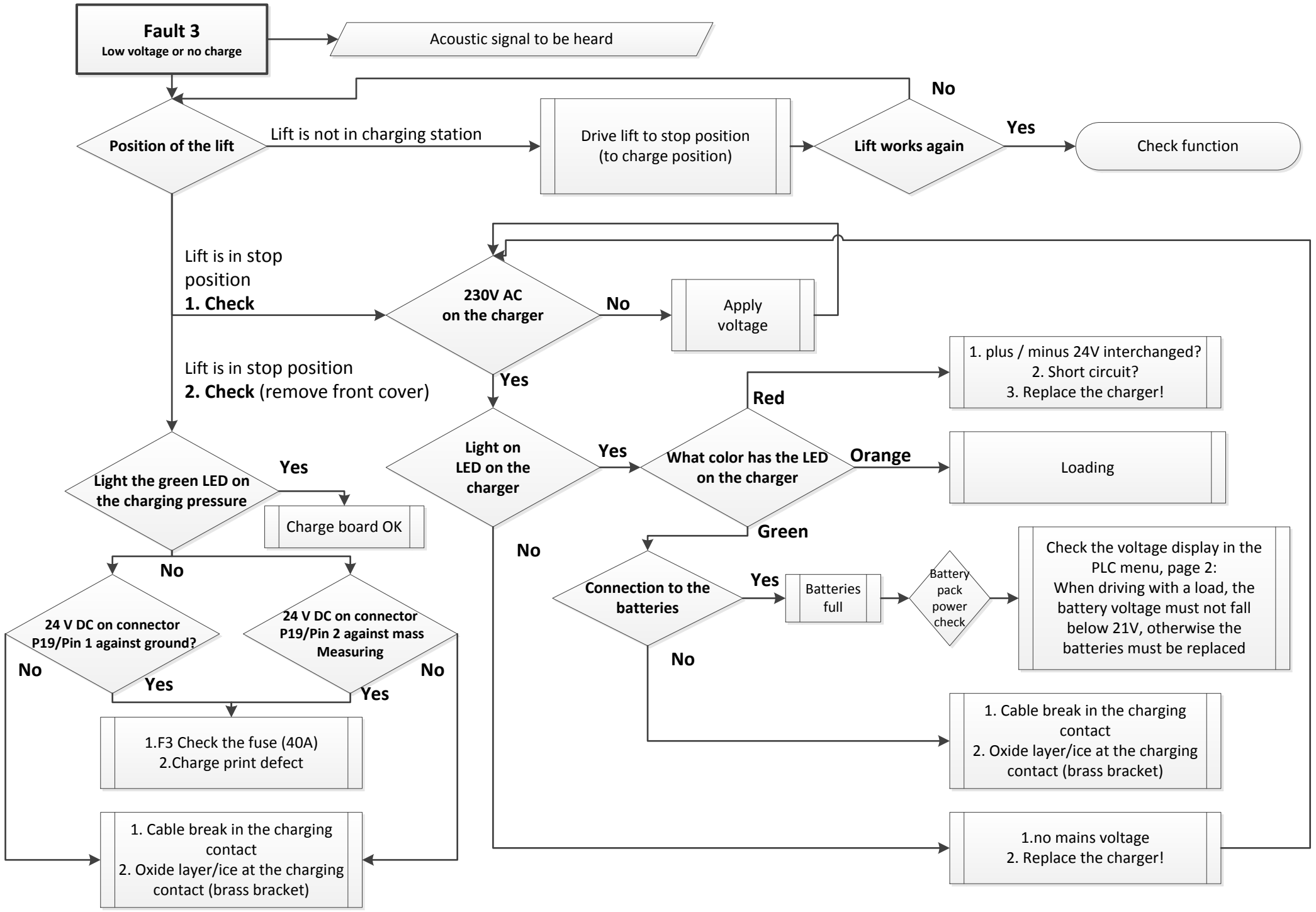
- **Name Trader:**
- **Callback number:**

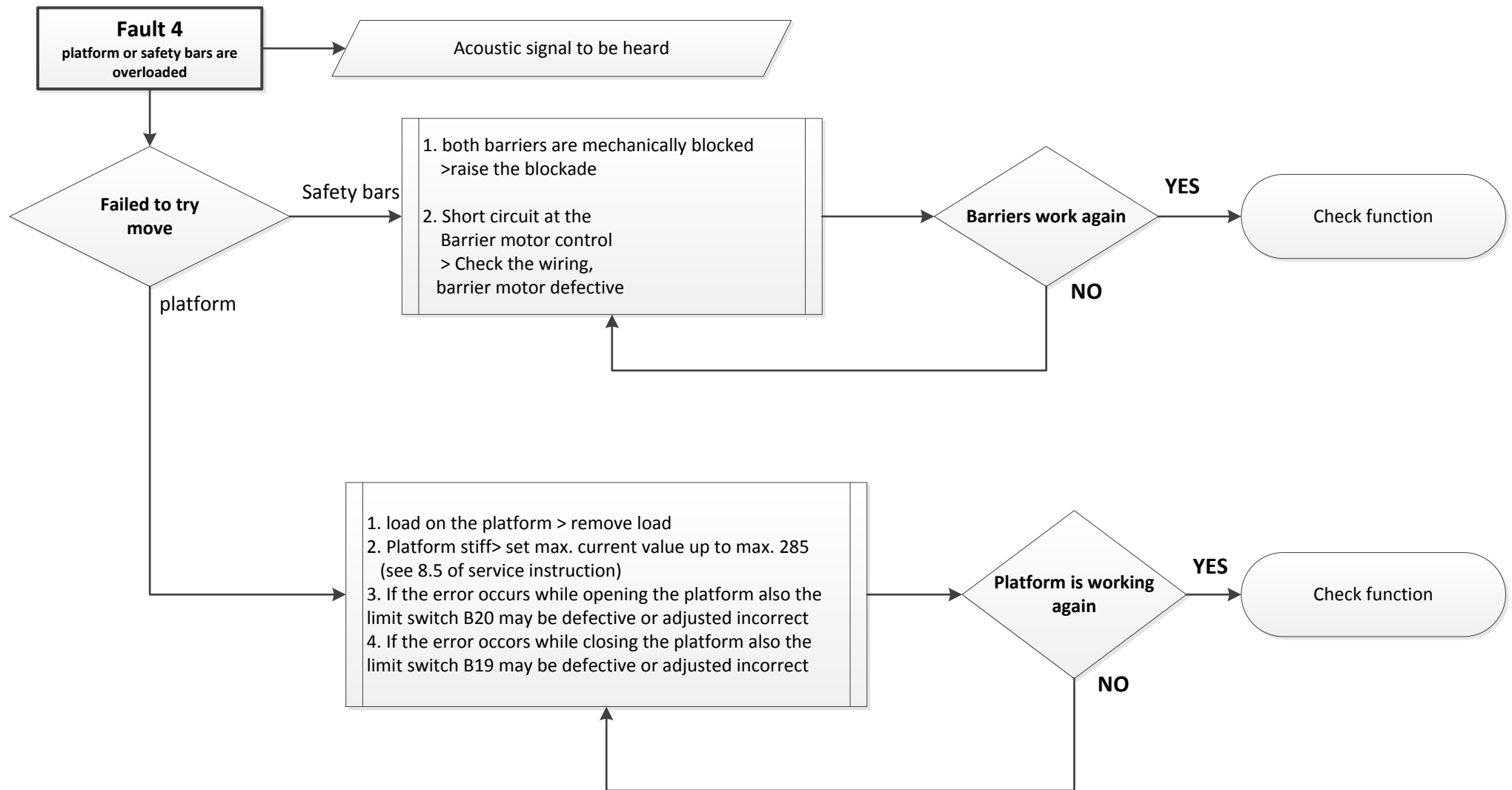
- **Name customer:**
- **Callback number:**

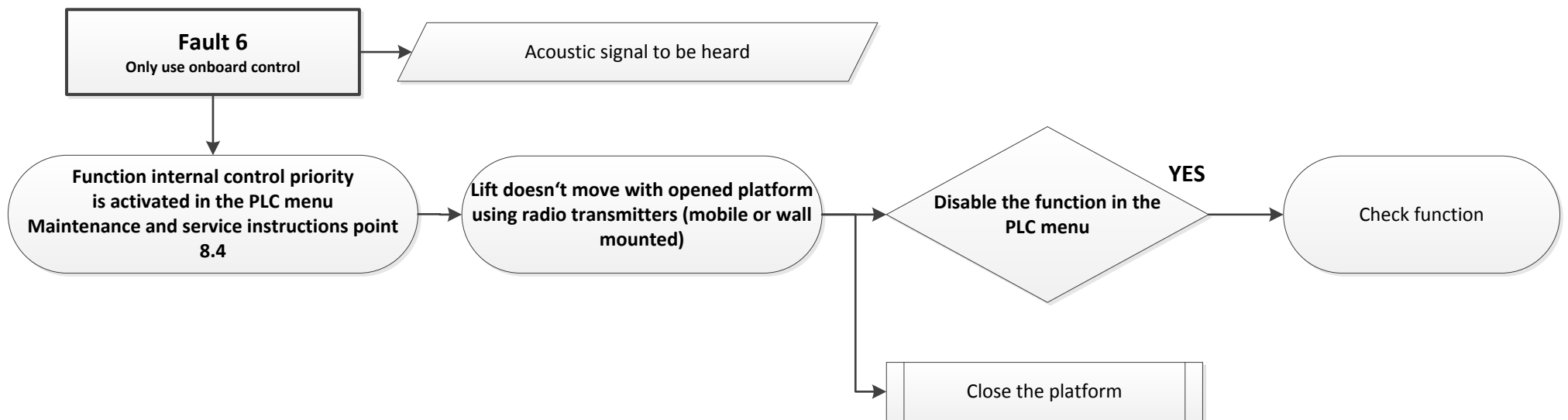
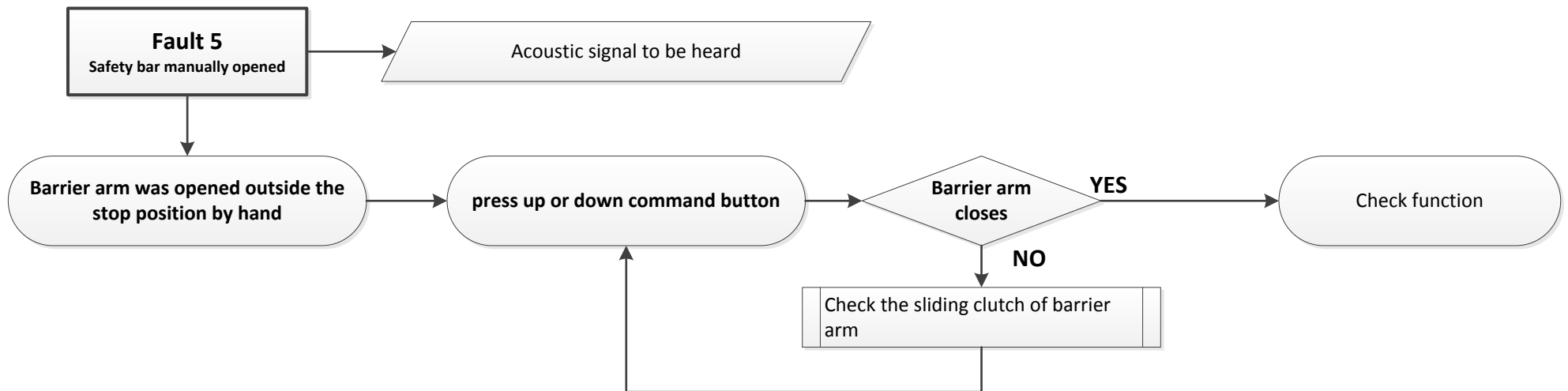


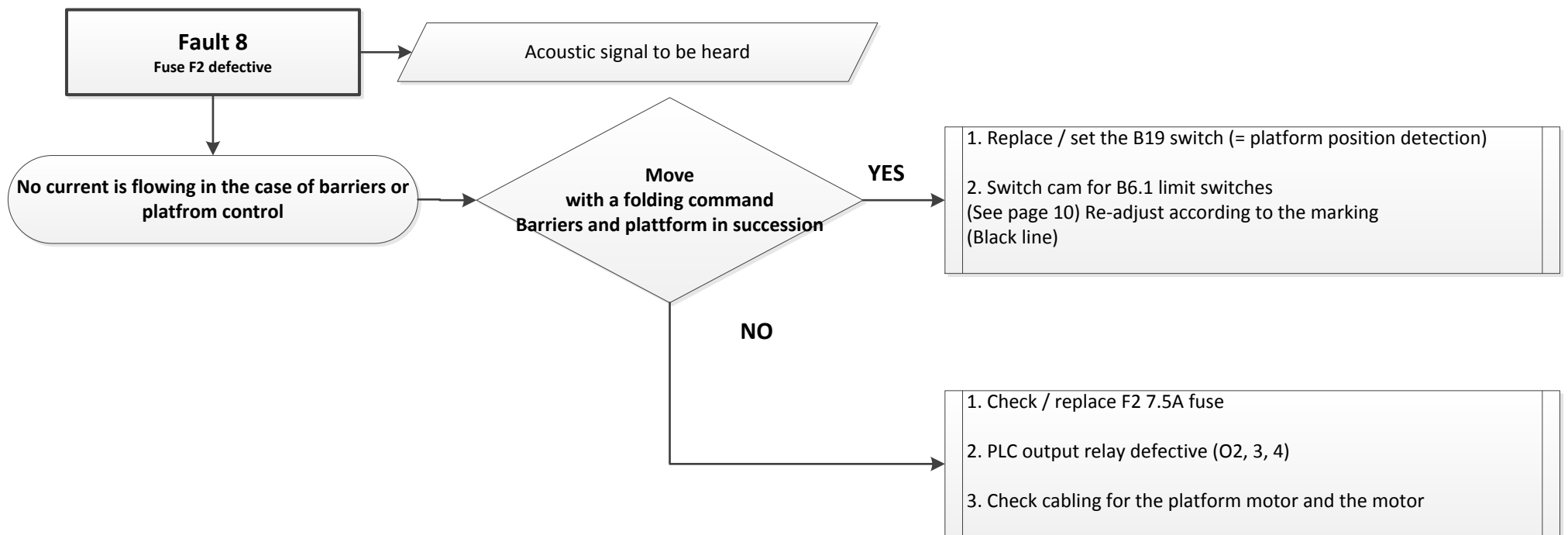
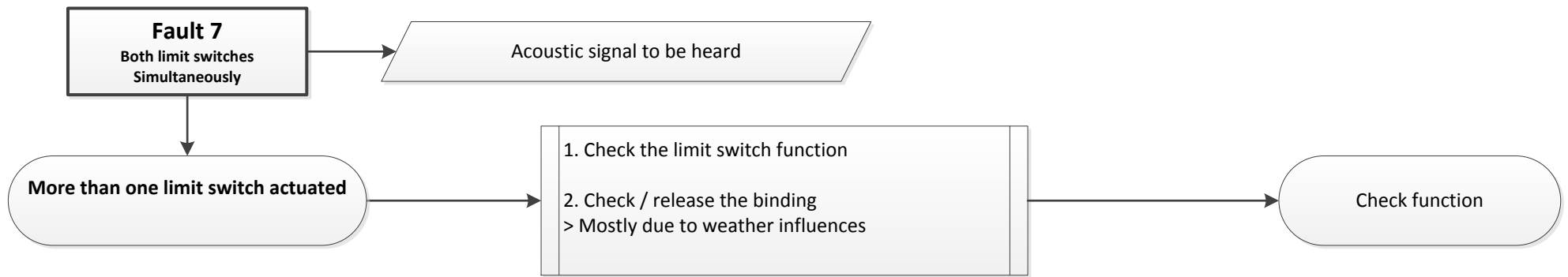
NOTE: clean the rails and rolls and grind the chatch mark

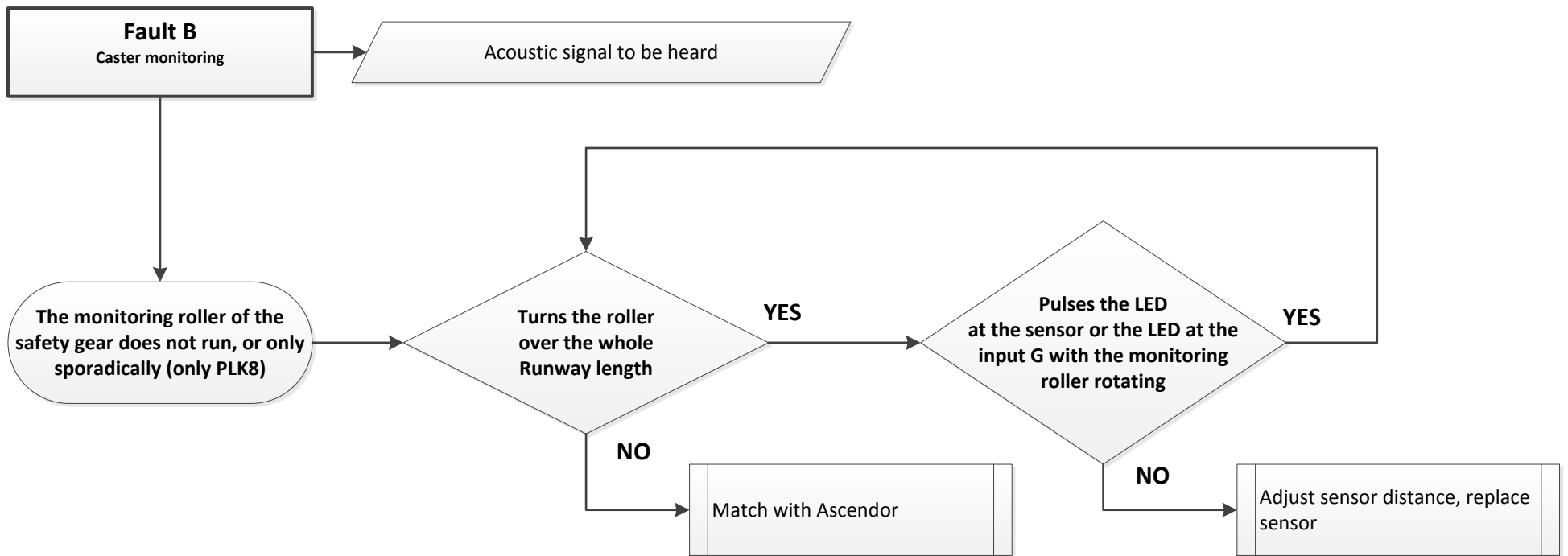
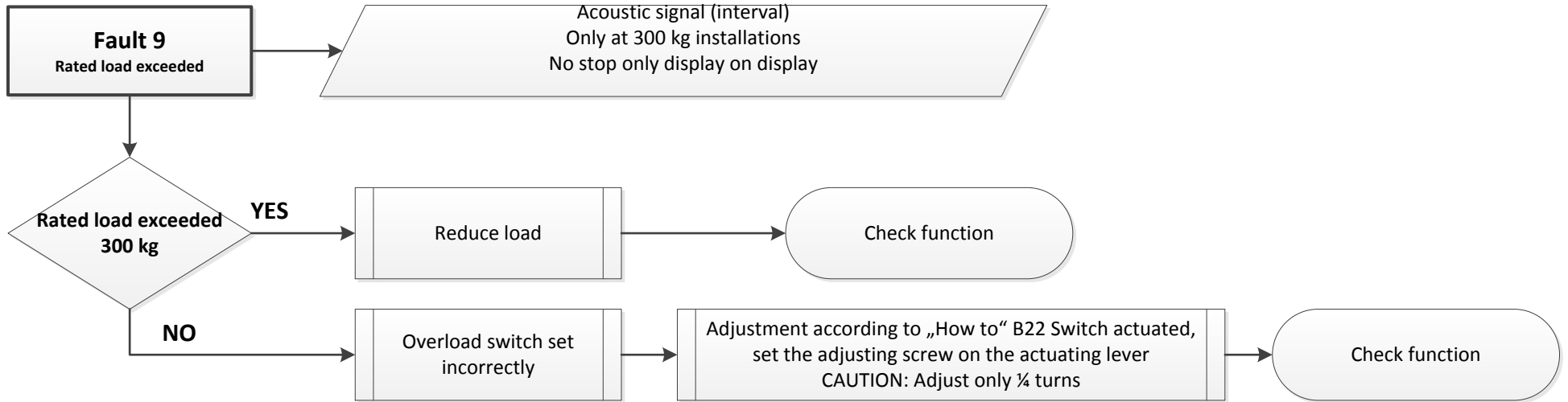


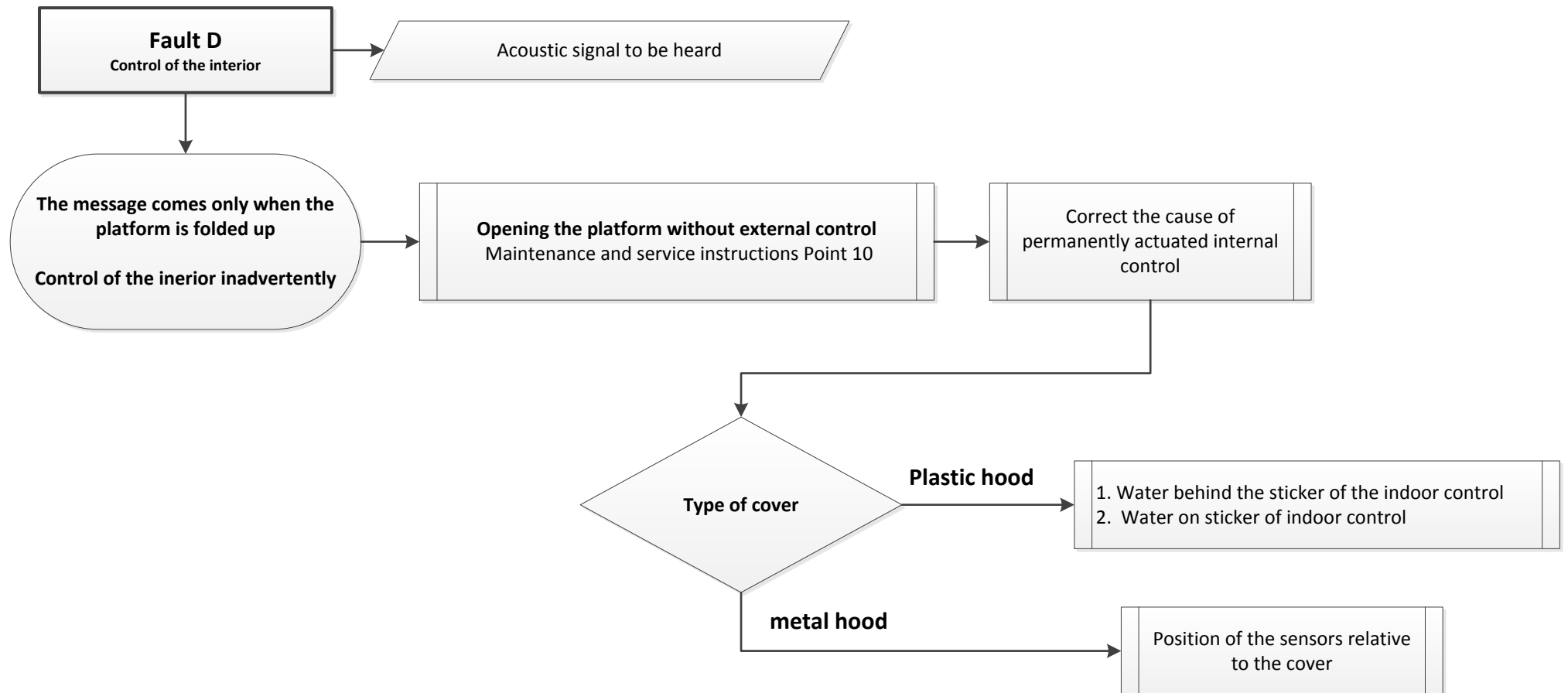
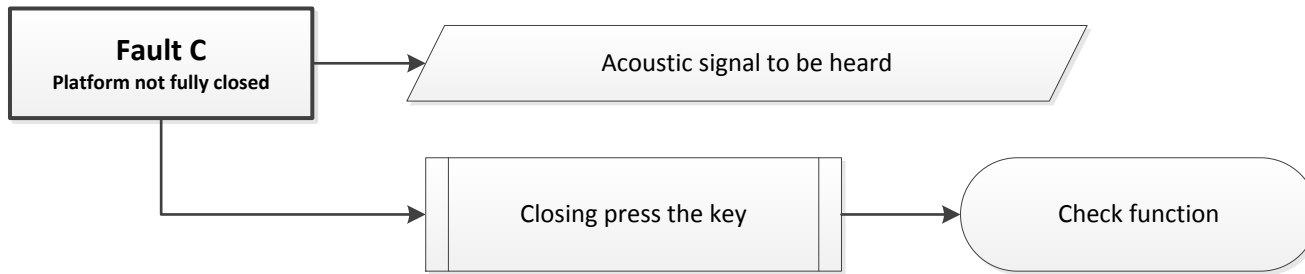


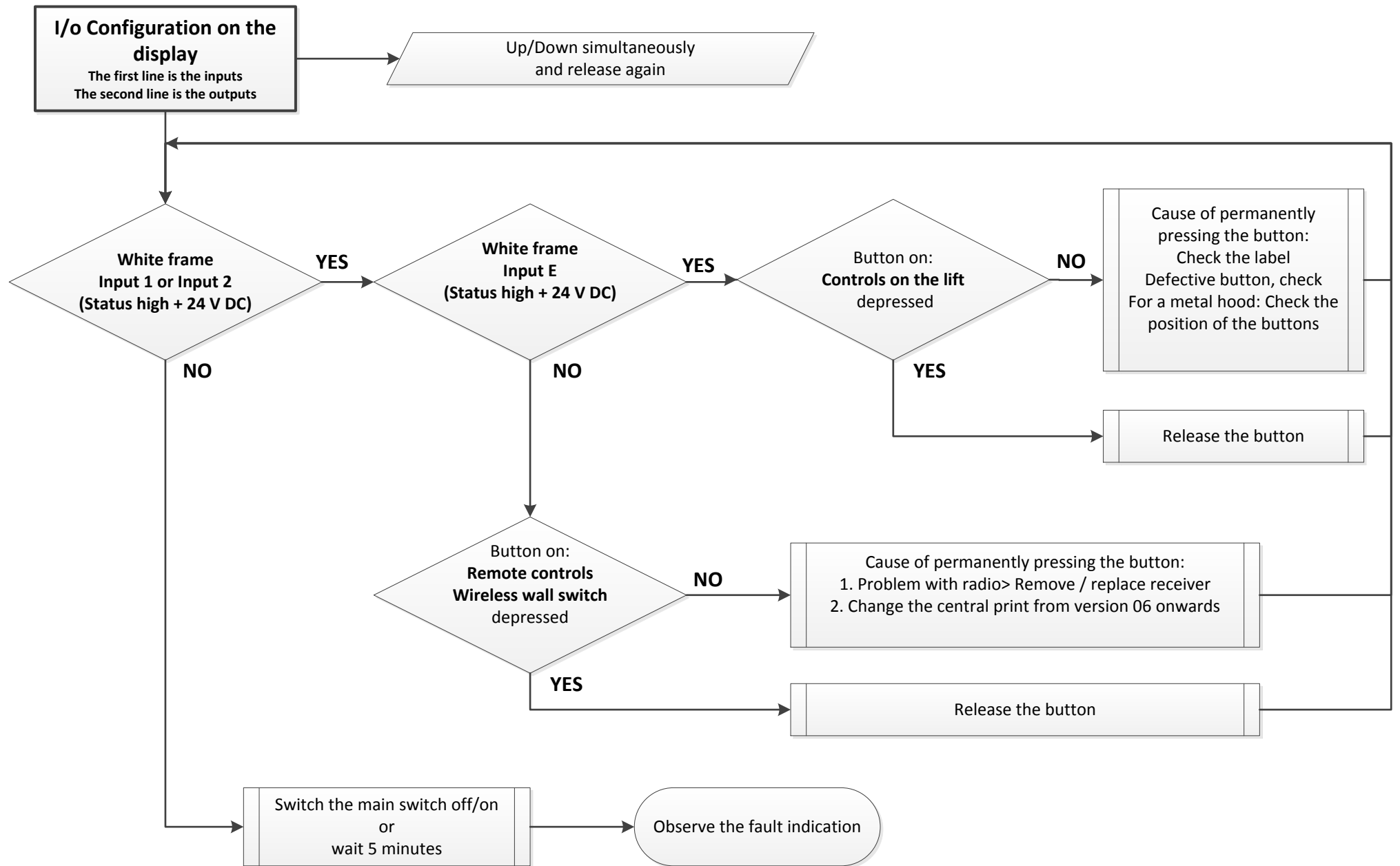


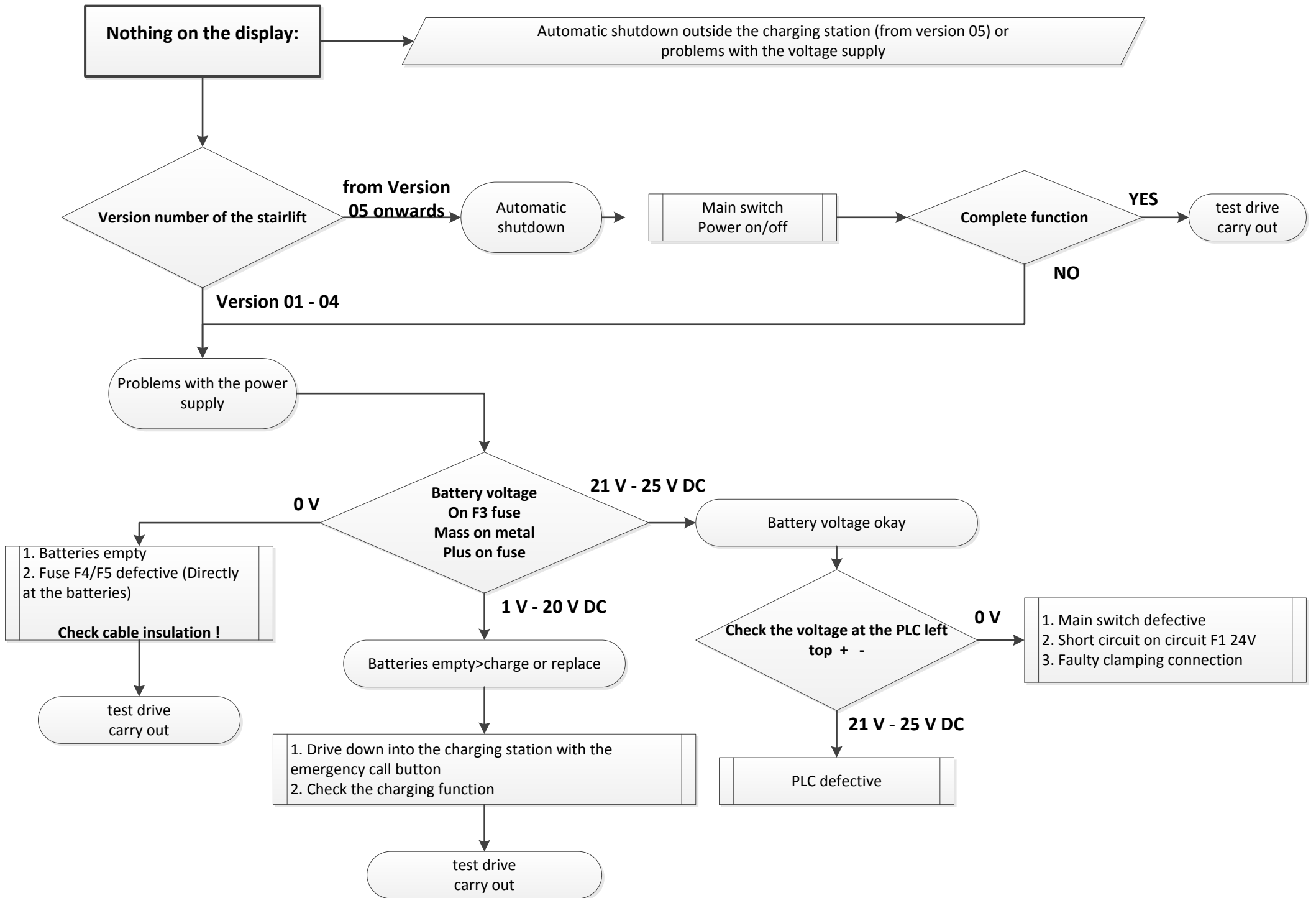












Nothing on the display:

Automatic shutdown outside the charging station (from version 05) or problems with the voltage supply

Version number of the stairlift

from Version 05 onwards

Automatic shutdown

Main switch
Power on/off

Complete function

YES

test drive
carry out

NO

Version 01 - 04

Problems with the power supply

21 V - 25 V DC

**Battery voltage
On F3 fuse
Mass on metal
Plus on fuse**

Battery voltage okay

0 V

- 1. Batteries empty
- 2. Fuse F4/F5 defective (Directly at the batteries)

Check cable insulation !

test drive
carry out

1 V - 20 V DC

Batteries empty > charge or replace

- 1. Drive down into the charging station with the emergency call button
- 2. Check the charging function

test drive
carry out

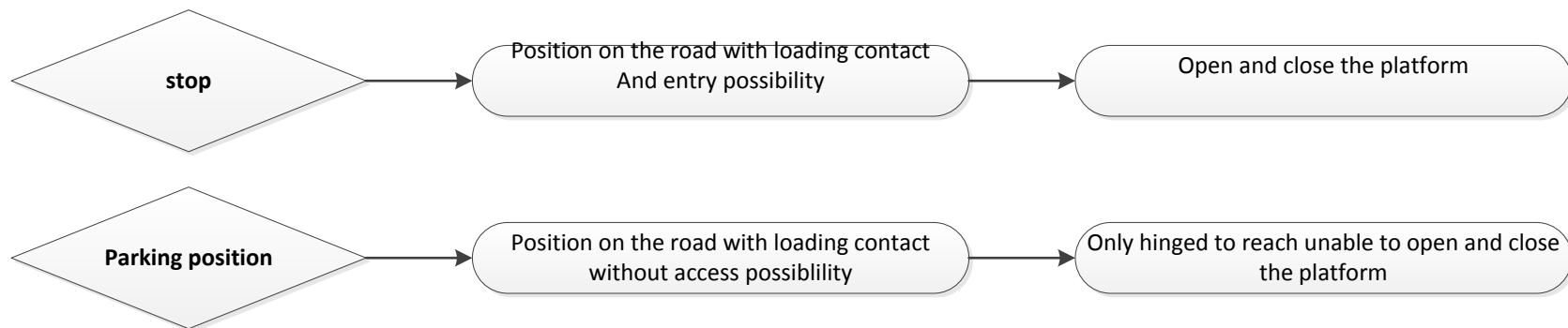
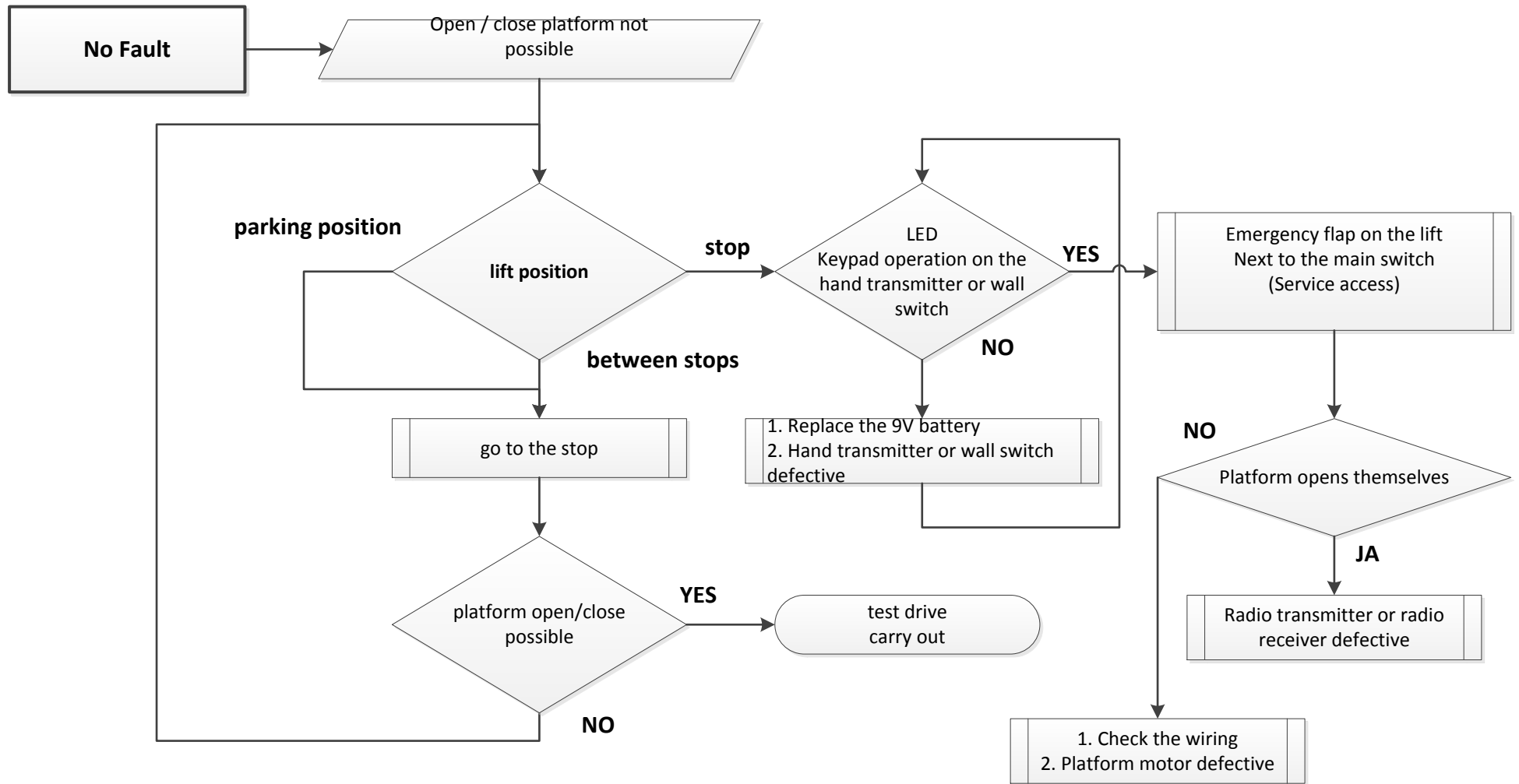
**Check the voltage at the PLC left
top + -**

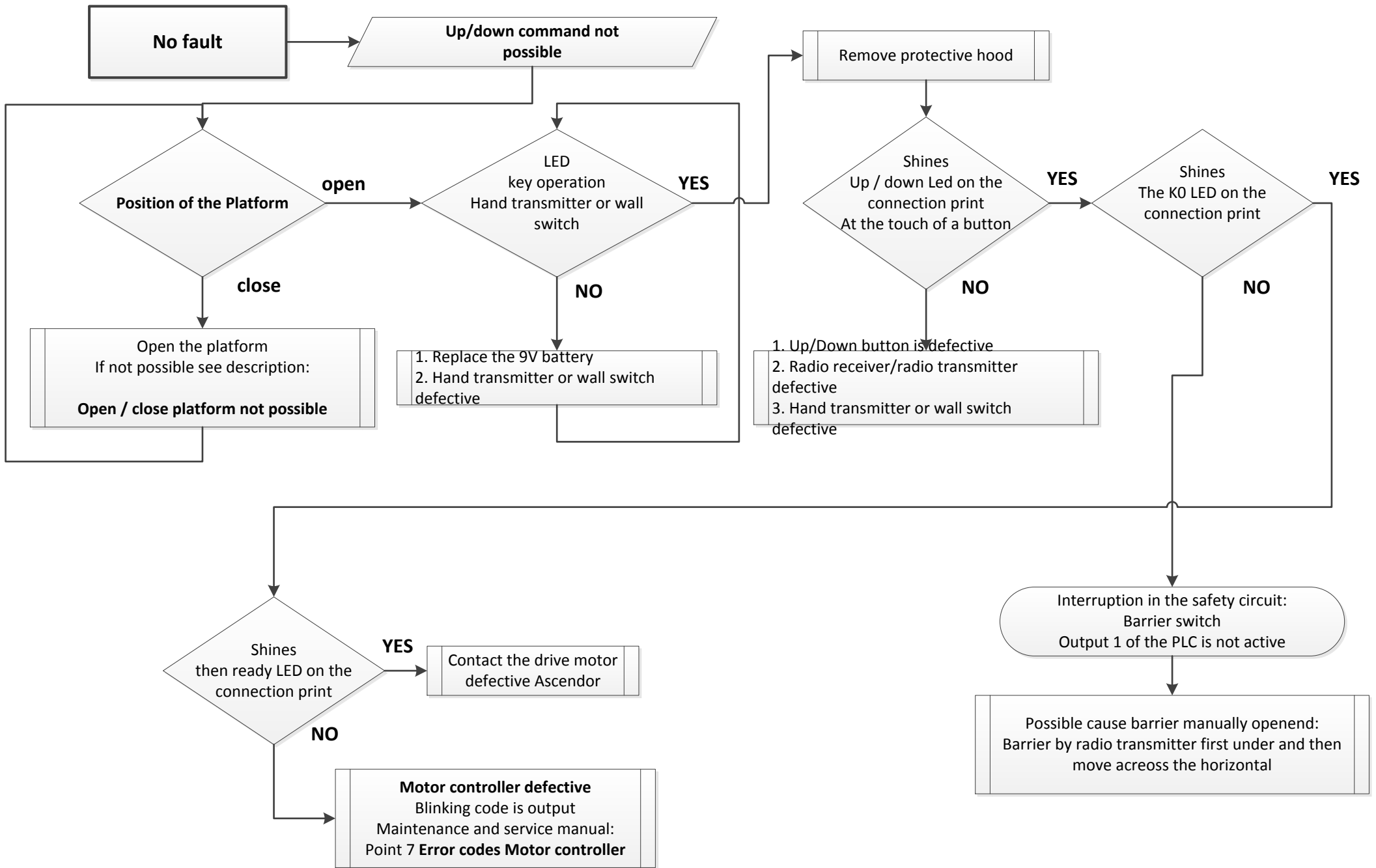
0 V

- 1. Main switch defective
- 2. Short circuit on circuit F1 24V
- 3. Faulty clamping connection

21 V - 25 V DC

PLC defective





Important instructions:

Technical support guide platformlift visio 20170214

Please make changes and additions Guenther.schoeffl@ascendor.at to mail